

ROOM TO

BREATHE

HAVING BEEN COLLATING IDEAS FOR HER DREAM HOME FOR SOME TIME, THE OWNER OF THIS ABODE ON THE NORTHERN BEACHES IN SYDNEY CAN FINALLY PUT THEM INTO ACTION

Story CHRIS PEARSON Styling HELICONIA Photography SIMON WHITBREAD



SEASIDE SANCTUARY After their children had long since flown the nest in their Northern Beaches home in Sydney, Lynne and Glenn decided the home was well overdue for an overhaul. Now, the new build is beautiful inside and out. “Hamptons style looks structured and together, yet relaxed,”

ACTUAL PAINT COLOURS MAY VARY ON APPLICATION

says Lynne. The exterior in James Hardie ‘Linea’ weatherboards in Dulux Endless Dusk create a beachy feel, while the kitchen, opening out to the deck, has benchtops in Caesarstone Calacatta Nuvo. The Falcon ‘Professional FX’ cooker is from Winning Appliances. >

KITCHEN “Before, the kitchen was in the middle of the house, with no light and flow,” says Lynne. “Now, as part of the open-plan design, it’s my favourite room.” ‘Lakehouse’ lights from Custom Lighting and Nicolazzi nickel tapware from Bathroom Collective are straight out of the Hamptons playbook. The island is painted in the same shade as the front door, Dulux Ship’s Officer, offset by cabinets in Dulux Snowy Mountains Quarter. ‘Cape Town’ stools from Wisteria Design add natural texture. >



ACTUAL PAINT COLOURS MAY VARY ON APPLICATION



DINING AREA Lynne (pictured, opposite) is right at home in the light and airy open-plan space including the dining area (top left & opposite). “We chose an extendable table, which opens out to about three metres, as we wanted to fit in the whole family,” she says of the ‘Bridgehampton’ parquetry table from Canalside Interiors. “Ten of us can sit here.” The window seat has storage underneath for kids’ books, toys and Christmas decorations. ‘Espen’ scoop back chairs from Brosa and a Visual Comfort ‘Classic Ring’ chandelier from Bloomingdales reflect the Hamptons aesthetic, as does a ‘Soloman’ console from Cafe Lighting & Living. The ‘Hawthorn’ bamboo and rattan side table from Searles Homewares acts as an informal bar. The high coffered ceiling – the stud here is 3.1m – is a signature feature of the Hamptons vernacular, with ‘Newport Rustic’ flooring from Havwoods throughout, providing warming timber tones.

LIVING AREA Lynne and Glenn’s existing custom ‘Gatty’ modular sofa from Sofas International sits as well in the new living (below left & right) as it did in the former home. A ‘Sorrento’ coffee table from SanShel Interiors is a winning match, topped with a tray and vase from Heliconia. The spot near the window is a prized corner for Lynne. “The sheers are really beautiful,” she says. “They create such a lovely light. I love the way it falls on the linen sofa.” The look is complete with an Emac & Lawton ‘Winslow’ lamp from Florabelle Living, and bowl and cushions from Alfresco Emporium. >

The owner of this sanctuary on Sydney’s Northern Beaches, Lynne, is a collector of design ideas. She has gleaned images from magazines, Insta and Pinterest for years, room by room, and now they magically intermingle in her dream home. But you can have too much of a good thing. “I am an OCD, detail kind of person,” confesses Lynne. So she asked interior designers Heliconia and architects Cradle Design to fashion those diverse strands into this inviting four-bedroom, two-storey retreat.

Lynne and husband Glenn bought the property in 2000 for themselves and their then-teenage children. It was occupied by a humble bungalow, to which they added and subtracted – then, in 2020, after their son and daughter had long since left home, they decided to give it a shake-up. “The house needed a major update,” says Lynne. “It was tired and, with its split levels and additions, the flow was poor.”

They asked architects Regan VanderWert-Walsh and Paul Lucas of Cradle Design to design a Hamptons-inspired home. “I’ve been drawn to this look for years,” says Lynne. “I love its blues, whites and greys, its openness and natural light, coffered ceilings, VJ panels and wainscoting.”

The old bungalow was a world away from this, with awkward levels, a one-car garage and asbestos issues, so Cradle called in the bulldozer. Now, with its weatherboard cladding, deep eaves and verandahs, sash windows, picket fence and white and blue-grey palette, the handsome result would look totally at home in East Hampton or Montauk.

The entry is flanked by a two-car garage and a study. Past a sitting room, a generous open plan connects to the rear garden. Up the stairs are four bedrooms. Most strikingly, Cradle placed a double-height void in the middle of the house, soaking upstairs and down in natural light. But arguably the biggest change was shifting the kitchen, previously exiled in the dark centre, to the open plan, where it’s part of the action.

For the interiors, Lynne needed help. “I know what I like but I like too many things,” she says. “I saw Heliconia on Instagram and they immediately got what I was talking about.” Sally Paterson, director of Heliconia, combined classic detailing such as in the wainscoting, stair posts and island bench with easy-care finishes and barefoot luxury, to make sure the home felt fresh and contemporary. “There were some stunning architectural elements, such as the high coffered ceilings, so we drew the eye to those with statement chandeliers,” says Sally.

Hardy materials such as engineered stone, polyurethane joinery, timber flooring, timber wainscoting and porcelain tiles complete the look. “The combination of colours and patterns achieves a sophisticated aesthetic, yet it is robust enough for the grandkids!” says Lynne. “I love the spaciousness. We can spread out when entertaining and it just flows. I also love how I can walk in the front door and see the pool at the back.”

Lynne has developed a love of cooking, too, thanks to her new kitchen. “I spend lots of time here,” she says. “Cooking was a chore but I enjoy it now. Just like the whole house, the kitchen truly inspires me.”

And those lovingly collated moodboards are neatly tucked away in the abundant storage throughout the home – for the moment, at least.

ARTWORK (THIS PAGE) DESIGNER BOYS

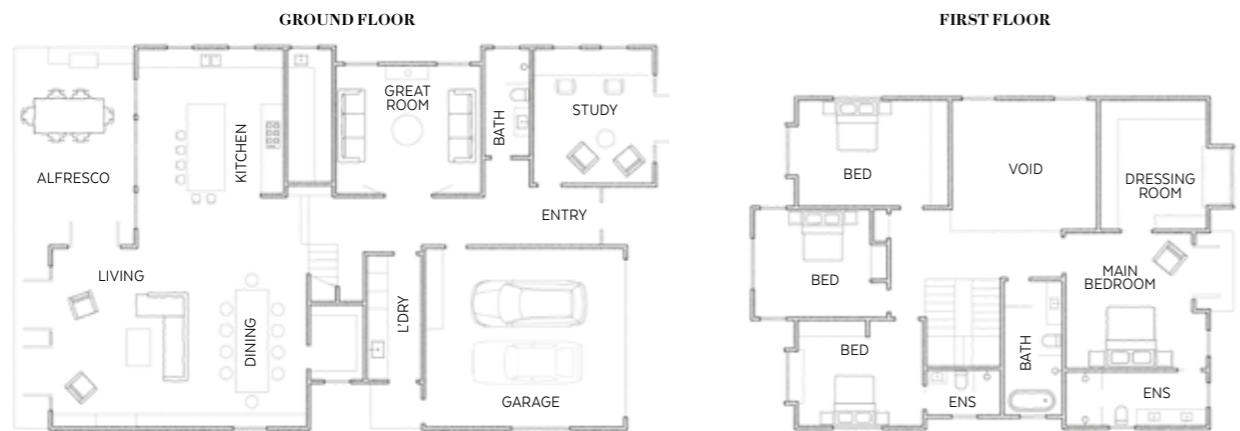




WE LOVE...
custom joinery
 No more wash-day woes in here, with clever Shaker-style joinery by Hay & Co delivering plenty of storage, including drawers below the washing machine for dirty clothes. The washing machine (and the unseen neighbouring dryer) are also mounted at hip level for easy access, while dummy 'cupboards' above conceal the dryer exhaust. Visit hayandco.com.au >



FLOOR PLAN



STUDY Glenn spends much of his time in the study (above) designed for working from home. Custom joinery in Dulux Hauraki Gulf two-pac by joiner Hay & Co features plenty of nooks for displaying pieces such as these collections from Alfresco Emporium while the luxe 'Espen' office chairs from Brosa provide 9-5 comfort. **LAUNDRY** In the galley laundry (opposite) the handcrafted tiles by Tiles by Kate on the floor are a standout feature and complement the Shaws fireclay butler's sink and Faucet Strommen 'Cascade' mixer, both from Bathroom Collective.

ILLUSTRATION KENZIEDSIGN.COM ARTWORK (THIS PAGE, ABOVE CENTRE DRAWERS) 'RAFFLES HOTEL' FROM VINTAGE ART EMPORIUM ALL OTHER ARTWORKS ARTISTS UNKNOWN ACTUAL PAINT COLOURS MAY VARY ON APPLICATION

“HAMPTONS STYLE
IN AUSTRALIA IS *all*
about celebrating OUR
COASTAL LIFESTYLE”

SALLY PATERSON, INTERIOR DESIGNER



WALL LIGHT (THIS PAGE), CUSTOM LIGHTING BEDLINE (OPPOSITE), TOP RIGHT), ADAIRS AND POTTERY BARN CUSHIONS ALFRESCO EMPORIUM AND MAVYN INTERIORS. ACTUAL PAINT COLOURS MAY VARY ON APPLICATION



DRESSING ROOM Thibaut 'Pompton Trellis' wallpaper from Steal The Limelight visually connects the dressing room (above left & bottom right) to the main bedroom (above right), with joinery in Dulux Snowy Mountains Quarter and Bremworth 'Samurai' carpet from Ken Sparks Carpets. **MAIN BEDROOM** "We weren't sure about having so much of the same wallpaper, but we love it," says Lynne. "It's actually quite subtle." A custom headboard in Warwick Fabrics 'Keylargo' linen in Frost lends texture. **GUEST BEDROOM** In the guest bedroom (below left), is a cane 'Hamilton' bedhead from Abide Interiors, a 'Sorrento' bedside table from Living Styles and 'White Coral' wallpaper from Olive et Oriel. **BATHROOM** 'Hardie Groove' VJ lining boards and joinery in Dulux Sea Breeze Half add a coastal feel to the bathroom (opposite) while a 'Zeta' mirror from Café Lighting & Living sits above Faucet Strommen 'Cascade' tapware from Bathroom Collective. The Kado 'Lussi' basin is from Reece. >





Source book

Interior design: Heliconia, 0404 810 395, heliconia.com.au.
Architect: Cradle Design, (02) 9029 5532, cradledesign.com.au.
Builder: Southern Star Constructions, 0414 281 687, southernstarconstructions.com.au.
Joiner: Hay & Co, (02) 8542 0775, hayandco.com.au.
Landscape design: Space Landscape Designs, (02) 9905 7870, spacelandscapedesigns.com.au.

DECK Hardy 'Millboard' composite decking from Hardware & General looks the part and, claims Glenn, is a breeze to keep clean. A skylight soaks the deck in natural light and, coupled with an 'Adriatic' reclaimed teak table from Living by Design and Wisteria Design 'Henley' dining chairs from Sydney Design Agency, is another popular spot to while away the hours.



HAMPTONS LUXE

INSIDE STORY
Lynne & Glenn's home

Who lives here?:
 Lynne, retired, and husband Glenn, CEO of an insurance company.

What is your favourite space?
 Lynne: "My kitchen. It gives me so much joy, with its colours, generous scale, abundant light and storage. It's a pleasure to cook in."

What would you do differently?
 "I can't think of anything. I love every single part of the house. But maybe we will put in a lift when we are old!"

Your top tip for renovators?
 "Choose your builder carefully and maintain a good relationship with them. Our wonderful builder, Ashley Fletcher of Southern Star Constructions, knew all the best tradies, plumbers and tilers. We got a good vibe from him right from the start."



(#1) 'DAVENPORT' CANDLESTICK TABLE LAMP FLORABELLE LIVING ARTWORK
 (#6) DESIGNER BOYS ALL OTHER ARTWORKS ARTISTS UNKNOWN ACTUAL PAINT COLOURS MAY VARY ON APPLICATION

1. 'Whitsunday Palm' art from Searles Homewares in one of the bedrooms.
2. Lynne in the kitchen. 'Cape Town' stools in Mud Grey from Wisteria Design.
3. Cushions from Alfresco Emporium dress up the dining area's window seat.
4. Laundry joinery by Hay & Co in Dulux Snowy Mountains Quarter is paired with handmade floor tiles from Tiles by Kate.
5. In the downstairs bathroom, a Kado 'Lussi' basin from Reece tops vanity joinery in Dulux Ship's Officer.
6. The 'Great Room' features a 'Manto' coffee table from Canvas+Sasson along with a 'Maxim' rug from The Rug Collection and 'Balmoral' sofas from Sofas International.
7. Glenn in the living area on a 'Bondi' armchair from One World Collection.

